



## Add the VIBRANCY to your showcase

A vibrant atmosphere with clean, modern design creating the perfect mesh to alleviate your business. Mesmerizing view opens up to a wide opportunity to highlight the uniqueness of your showcase, captivating the interest of readily available catchment of shopping souls.

Perfect  
**MOMENT** for a  
Perfect  
**LIFESTYLE**



A place with excellent amenities and facilities to complement an active and fun lifestyle, perfect in every sense. The place where everyone gathers for a spot of relaxation after a hard day at work, or simply to catch up with friends.



LEGEND		*Operating in 2018	
	MRT LINE 2 (Dedicated)		Proposed MEX Extension
	KLIA Transit		
	Education		Shopping Mall
	Healthcare		
1	*SJK(C) Union	3	LimKokWing University
2	Multimedia University	4	Uniten
5	UiTM	7	Xiamen University
6	SJK(C) Dengkil	8	Nilai University
9	DPulze Shopping Centre	10	iOi City Mall
11	Alamanda	12	Mitsui Outlet
13	Putrajaya Hospital		

Property Gallery Opens Daily :  
**9.30am - 6pm**  
For Enquiry, Please Contact :  
**+6011 1722 5988**



Eco Green City Sdn. Bhd. (822302-1)  
A subsidiary of MCT Bhd (881786-X)  
Ground Floor, MCT Tower, One City, Jalan USJ 25/1,  
47650 Subang Jaya, Selangor D. E.  
Tel +603 5115 9988 Fax +603 5115 9995

facebook.com/cybersouth  
cybersouth@mct.com.my



The  
**FIRST SHOPLOT**  
in vibrant township



# PARKPLACE I

CYBERSOUTH



## A new tone for Cybersouth

Spaciously amazing affordable shops surrounded by various commercial outlets to jump-start your business. Awesome connectivity and easy access complementing a vivacious lifestyle and providing exceptional capital appreciation to your investment. ParkPlace I is setting a new exciting tone in the upbeat development of Cybersouth.

\*Subject to requirement.

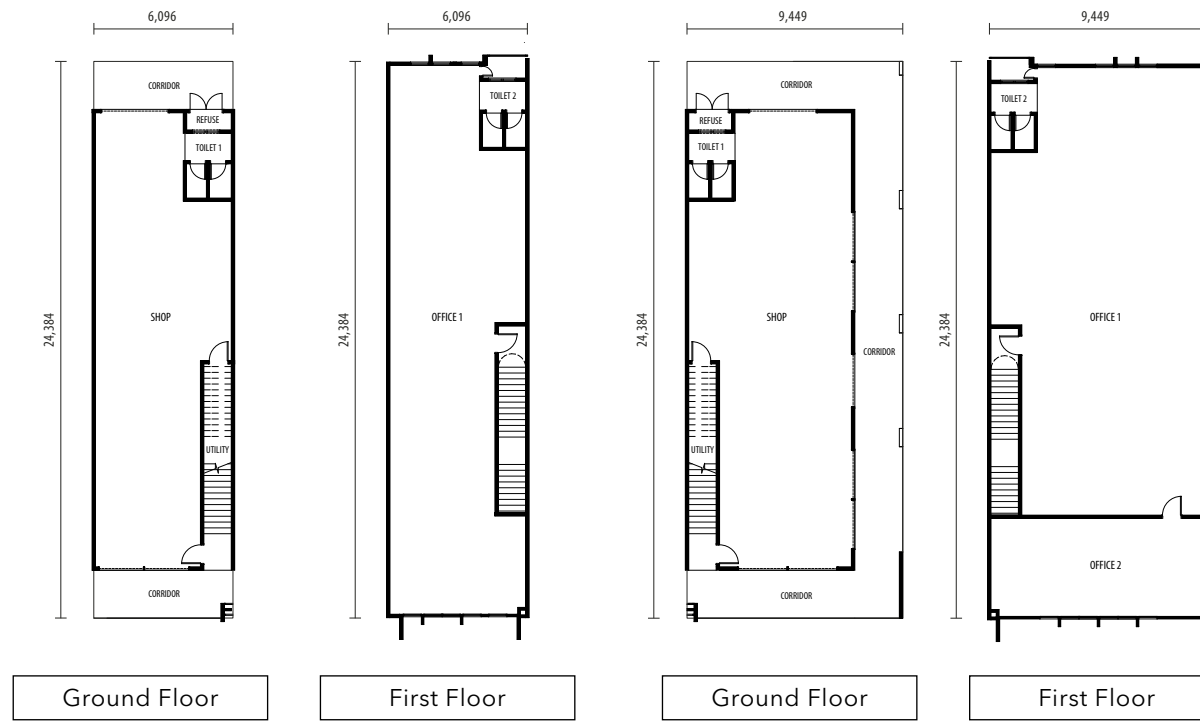
## Floor Plan



**TYPE A - 2-STOREY SHOP-OFFICES**  
3 phase electrical (60Amps)

**INTERMEDIATE LOT - 20' x 80'**  
Built-Up Area: 2,934 sq.ft.

**CORNER LOT - 31' x 80'**  
Built-Up Area: 4,085 sq.ft.



## Site Plan



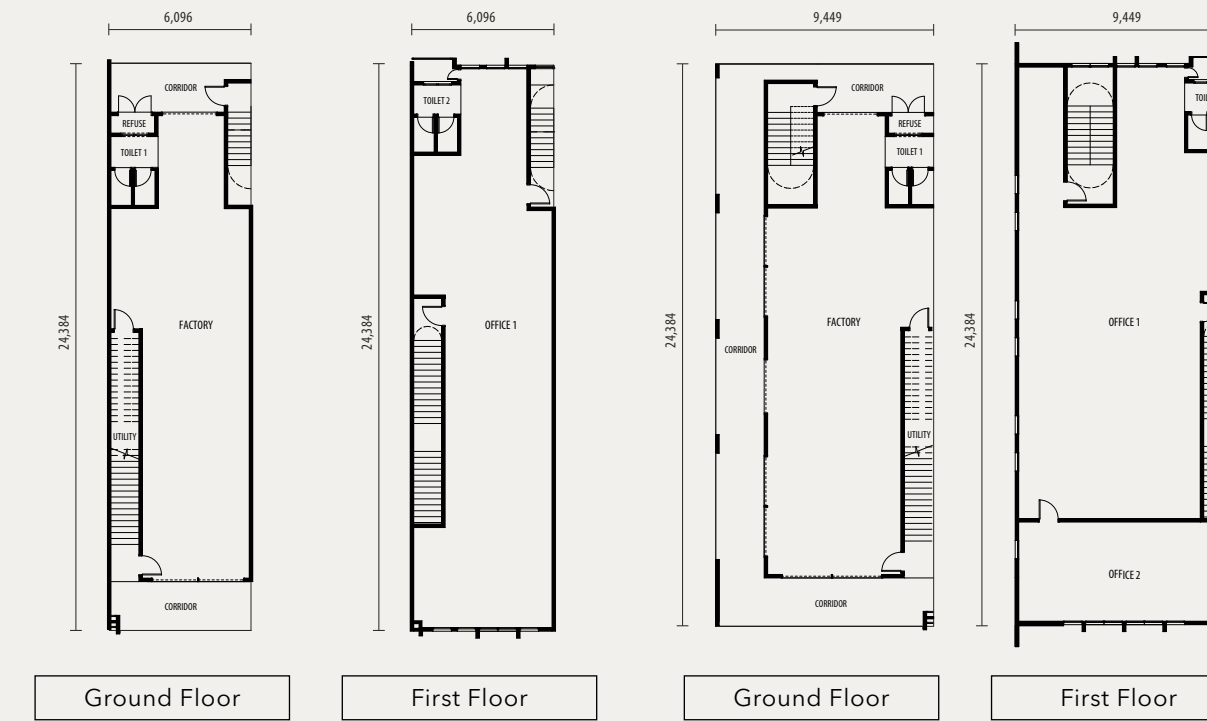
## Floor Plan



**TYPE B - SHOP OUTLET**  
3 phase electrical (150Amps)  
Loading capacity (5kN/m²)

**INTERMEDIATE LOT - 20' x 80'**  
Built-Up Area: 2,812 sq.ft.

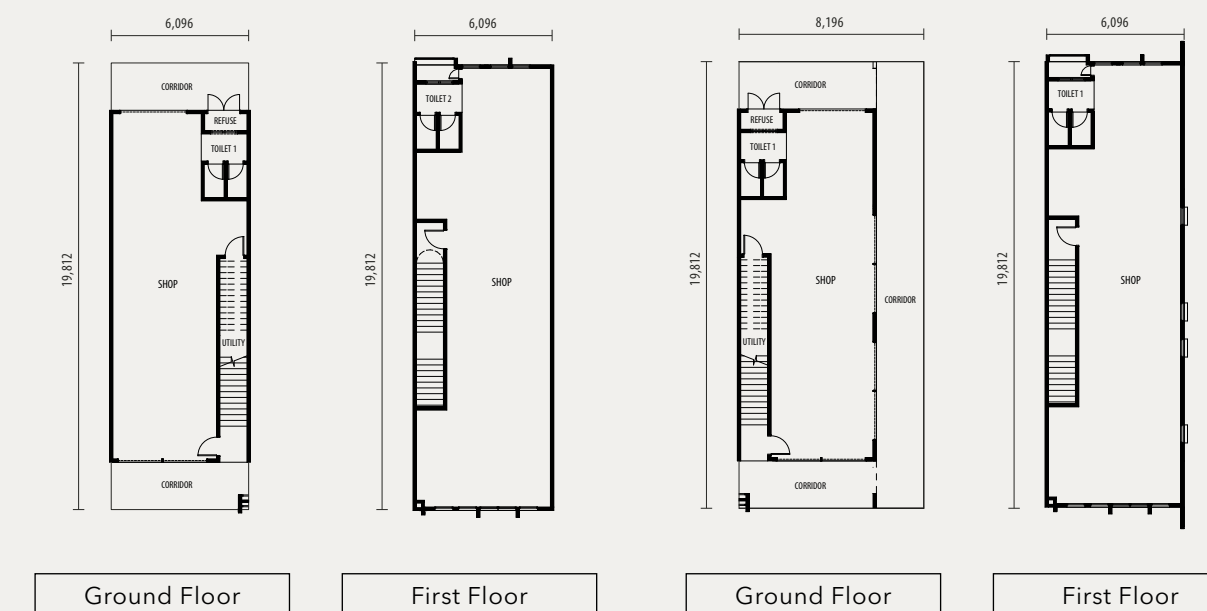
**CORNER LOT - 31' x 80'**  
Built-Up Area: 3,838 sq.ft.



**TYPE C - KEDAI MAMPU MILIK\***

**INTERMEDIATE LOT - 20' x 65'**  
Ground Floor Built-Up Area: 970 sq.ft.  
First Floor Built-Up Area: 1,190 sq.ft.

**CORNER LOT - 20' x 65'**  
Ground Floor Built-Up Area: 957 sq.ft.  
First Floor Built-Up Area: 1,150 sq.ft.



417 acres Township



25 acres Central Park



Over 500 of MSC status company



8 universities and 5 private schools



A population of approximately 150,000



5 major highways Putrajaya - Cyberjaya LDP / MEX SKVE / Elite